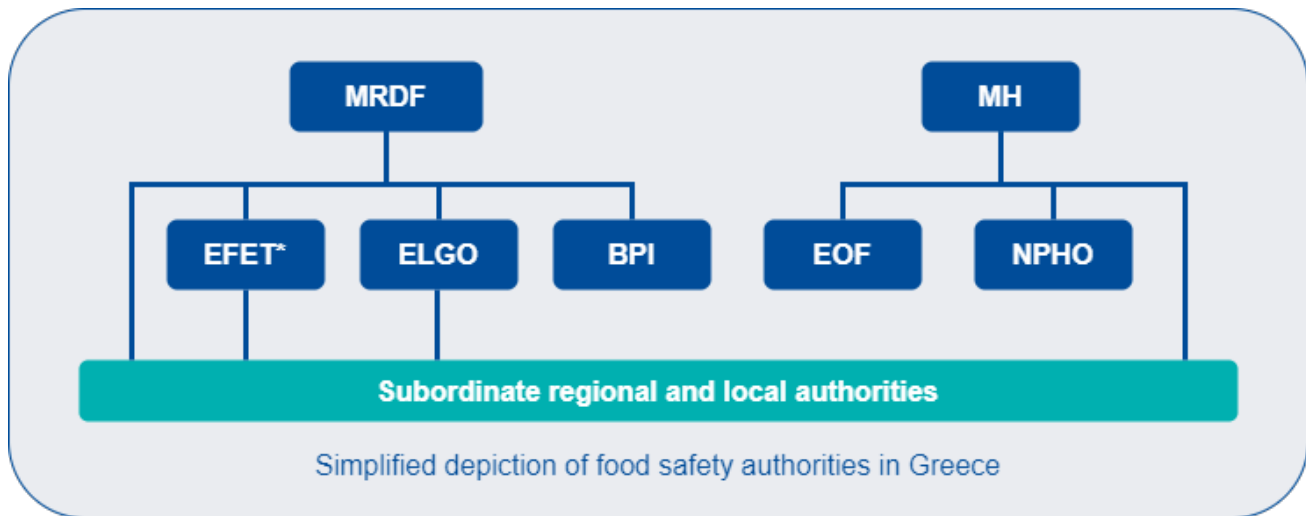


Greece

Last updated on 18 October 2024.



* Host institution of the national EFSA Focal Point. For information on the EFSA Focal Point network, please see the EFSA website.

© *worldfoodsafetyalmanac.bfr.berlin*

Regulation (EC) No. 178/2002 is the central legal foundation for food legislation in Greece. Infringement of food regulations can lead to measures under criminal law and consumer damage claims under civil law, whereby the final decision rests with the courts. Government measures with regard to food safety are often based on scientific risk assessments. However, the final decision on the legality of governmental measures rests with the courts.

□

Contents

Ministry of Rural Development and Food
Ministry of Health
Hellenic Food Authority
National Organization for Medicines
Benaki Phytopathological Institute
Hellenic Agricultural Organisation - DIMITRA
National Public Health Organization
Regional and local levels
Article 36 institutions

Ministry of Rural Development and Food

Name	Ministry of Rural Development and Food
Acronym	MRDF
Activities	<ul style="list-style-type: none">• Agricultural policy, food safety• Risk assessment• Risk communication• Risk management
Responsibilities	
Location	Athens
URL	http://www.minagric.gr

The Ministry of Rural Development and Food (MRDF) is responsible for agricultural policy promoting sustainable agriculture, food safety and security, the viability of the sector and the prosperity of rural areas in Greece. MRDF implements horizontal and vertical legislation in the area of food and feed and is responsible for the coordination of food safety inspections, in cooperation with EFET. MRDF engages in transparent communication with consumers on topics of food and feed safety. Additionally, MRDF is also responsible for residues of plant protection products and veterinary medicinal products, genetically modified organisms (GMOs) and zoonoses. Last but not least, MRDF monitors veterinary inspections by local authorities and is the regulatory authority for pesticides (plant protection products and biocides).

The bases for MRDF management measures are the risk assessments undertaken by MRDF itself or its supervised organizations.

62 National Reference Laboratories operate in Greece pursuant to Regulation (EU) No. 2017/625.



Ministry of Health

Name	Ministry of Health
Acronym	MH
Activities	<ul style="list-style-type: none">• Health policy, nutrition policy, food safety• Risk assessment• Risk communication• Risk management
Responsibilities	
Location	Athens
URL	http://www.moh.gov.gr

The Ministry of Health (MH) deals with the determination of sanitary conditions and control measures for enterprises subject to public health regulations, the national nutrition policy focusing on health promotion, the surveillance of the quality of water intended for human consumption, and the provision of guidelines regarding:

- a.) quality assurance and surveillance of bottled waters,
- b.) issuance of permits for bottling factories,
- c.) health control of bottling factories.

Hellenic Food Authority

Name	Hellenic Food Authority
Acronym	EFET
Activities	<ul style="list-style-type: none">• Risk assessment• Risk communication• Risk management• Codex Contact Point• EFSA Focal Point• RASFF contact point
Responsibilities	 
Location	Athens
URL	http://www.efet.gr

The Hellenic Food Authority (EFET) is a National Public Agency which operates under the Ministry of Rural Development and Food. EFET's mission is the protection of public health and consumers interests by ensuring the production and distribution of safe and healthy food. It also acts to prevent misleading information in relation to safety and quality of food through labeling.

Its core responsibilities include: the organization and support of the national and EU control programs on food and food contact materials, the supervision of their implementation and the evaluation of official control results; the protection of the consumer from fraudulent or misleading commercial practices, such as misleading labeling and advertising, as well as, food adulteration; the management of various food incidents and crises; the communication to the consumers of food related risks and raise awareness about food safety and nutritional matters; the risk assessment and risk communication of food related hazards. This is carried out via collaboration with the Scientific Council on Food Control, an advisory body of EFET's Management Board; the implementation of training programs for the staff of the national competent food authorities that conduct official controls.


National Organization for Medicines

Name	National Organization for Medicines
Acronym	EOF
Activities	<ul style="list-style-type: none">• Risk assessment• Risk communication• Risk management
Responsibilities	
Location	Athens
URL	http://www.eof.gr

The National Organization for Medicines (EOF) is a public entity administratively under MH. The task of EOF is to ensure public health and safety of medicinal products for human and veterinary use. The remit of EOF also includes foodstuffs intended for particular nutritional uses, food supplements, specific product types of biocides, medical devices and cosmetics. EOF is the regulatory authority for veterinary medicinal products and all health-related products in Greece. It monitors the post-marketing product quality, safety and efficacy. EOF proposes and promotes medical and pharmaceutical research. EOF also supplies the public and health professionals with objective information on medicines (for human and veterinary use) and other health-related products to ensure their safe and rational use and to support

optimal cost effectiveness.

Benaki Phytopathological Institute

Name	Benaki Phytopathological Institute
Acronym	BPI
Activities	<ul style="list-style-type: none">• Research• Risk assessment
Responsibilities	
Location	Athens
URL	http://www.bpi.gr

The Benaki Phytopathological Institute (BPI) is a research institute, public sector entity that works independently in the field of science and operates under the supervision of the MRDF. BPI is the Greek National Competent Authority for the evaluation and risk assessment of plant protection products and specific product types of biocides. The Institute also performs analytical work and mandated post-registration activities in the field of pesticides i.e. pesticides residues analysis in different matrices and monitoring of the quality of pesticide products, to ensure the safety of foodstuffs and agricultural products. The Laboratories of the Institute are official control labs in which the National and EU coordinated monitoring programs of pesticides residues, veterinary drugs are implemented. In addition, analytical activities for the monitoring of contaminants in food, feed and water are also conducted. Regarding plant health, BPI performs risk assessments for emerging harmful organisms.


The research conducted at BPI is aimed to address various needs and requirements of the agricultural sector. The main scientific disciplines covered by BPI are related to phytopathology, entomology & agricultural zoology, pesticide safety for human health, non-target species and the environment.

Hellenic Agricultural Organisation - DIMITRA

Name	Hellenic Agricultural Organisation - DIMITRA
Acronym	ELGO - DIMITRA
Activities	<ul style="list-style-type: none">• Research• Risk assessment• Risk management
Responsibilities	
Location	Athens
URL	http://www.elgo.gr

ELGO - DIMITRA is a public benefit, independent body under the supervision of MRDF, and is governed by private law. The main objective of ELGO - DIMITRA is to develop and/or support actions aimed at modernizing and developing the country's agricultural sector, combining Innovation, Research and Technology with its 11 research institutes, improving production processes, enhancing competitiveness, certifying quality agricultural products and food (e.g. origin and identity of products), establishing and certifying good agricultural practices and implementing controls in the milk and meat production chain in the country. Furthermore, ELGO - DIMITRA organises and operates vocational educational training and schools.

National Public Health Organization

Name	National Public Health Organization
Acronym	NPHO
Activities	<ul style="list-style-type: none">• Risk assessment• Risk communication• Risk management
Responsibilities	
Location	Athens
URL	https://eody.gov.gr/

The National Public Health Organisation (NPHO) is a legal entity governed by private law under the supervision of MH. It is responsible for the surveillance of food borne, water borne and zoonoses sporadic disease cases. Moreover, NPHO is responsible for the coordination of outbreaks investigations at the national level and provides support at the local level. Also, NPHO's Public Health laboratories are responsible under the national regulatory framework for performing regular microbiological and chemical analyses of drinking and mineral water for monitoring the quality of both water substrates. This laboratory network may also perform microbiological analysis of food samples routinely but also for the purpose of foodborne outbreak investigations.

In the context of food-borne outbreaks investigations the NPHO informs the Public Health Directorate at regional level, the Hellenic Food Authority, as well as the Ministry of Rural Development and Food are informed and appropriate action is taken.

Regional and local levels

Regional and local levels in Greece consist of seven decentralised administrations, 13 regions and 325 municipalities under the Ministry of the Interior. The 9 regional EFET authorities in collaboration with the regional and local authorities of Ministry of the Interior are responsible for the implementation of official food control programs. MRDF and EFET are both responsible for coordinating regional food control programs implementation. The Ministry of Health also supervises public health services at local level.

The General Chemical State Laboratory and its regional Chemical Services are under the supervision of the Independent Authority for Public Revenue and are responsible for the laboratory analyses of foodstuffs.

Article 36 institutions

Institutions involved in the EFSA network pursuant to Article 36 Reg. (EC) No. 178/2002

1. Hellenic Food Authority (EFET) - Ενιαίος Φορέας Ελέγχου Τροφίμων (EFSA Focal Point)
2. Benaki Phytopathological Institute (BPI) - Μπενάκειο Φυτοπαθολογικό Ινστιτούτο
3. National and Kapodistrian University of Athens (NKUA) - Εθνικό και Καποδιστριακό Πανεπιστήμιο Αθηνών
4. University of Crete (UC) - Πανεπιστήμιο Κρήτης
5. Hellenic Agricultural Organisation - DIMITRA (ELGO-DIMITRA) - Ελληνικός Γεωργικός Οργανισμός ΔΗΜΗΤΡΑ
6. Ministry of Rural Development and Food (MRDF) - Υπουργείο Αγροτικής Ανάπτυξης και Τροφίμων
7. National Centre for Scientific Research "Demokritos" (NCSR Demokritos) - Εθνικό Κέντρο Έρευνας
8. University of Thessaly (UTH) - Πανεπιστήμιο Θεσσαλίας
9. Aristotle University of Thessaloniki (AUTH) - Αριστοτέλειο Πανεπιστήμιο Θεσσαλονίκης
10. University of Patras (UPatras) - Πανεπιστήμιο Πατρών
11. Democritus University of Thrace (DUTH) - Δημοκρίτειο Πανεπιστήμιο Θράκης
12. Agricultural University of Athens (AUA) - Γεωπονικό Πανεπιστήμιο Αθηνών
13. International Hellenic University (IHU) - Διεθνές Πανεπιστήμιο της Ελλάδος

Retrieved from "<https://worldfoodsafetyalmanac.bfr.berlin/index.php?title=Greece:Greece&oldid=8073>"

This page was last edited on 18 October 2024, at 13:50 from EFET1.