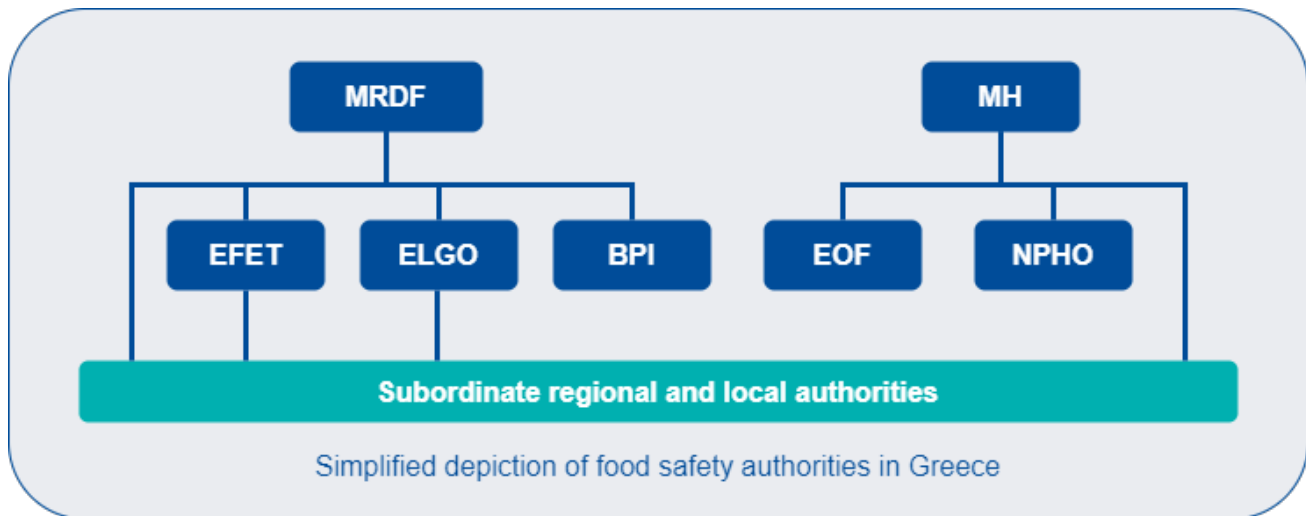


Greece



© *worldfoodsafetyalmanac.bfr.berlin*

Regulation (EC) No. 178/2002 is the central legal foundation for food legislation in Greece. Infringement of food regulations can lead to measures under criminal law and consumer damage claims under civil law, whereby the final decision rests with the courts. Government measures with regard to food safety are often based on scientific risk assessments. However, the final decision on the legality of governmental measures rests with the courts.

In Greece, there is no institutional separation of risk assessment from risk management in any sector.

□

Contents

Ministry of Rural Development and Food
Ministry of Health
Hellenic Food Authority
National Organization for Medicines
Benaki Phytopathological Institute
Hellenic Agricultural Organisation - Demeter
National Public Health Organization
Regional and local levels
Article 36 institutions

Ministry of Rural Development and Food

Name	Ministry of Rural Development and Food
Acronym	MRDF
Activities	<ul style="list-style-type: none">• Agricultural policy, food safety• Risk assessment• Risk communication• Risk management
Responsibilities	
Location	Athens
URL	http://www.minagric.gr

The Ministry of Rural Development and Food (MRDF) is responsible for agricultural policy and safety of agricultural (food) products in Greece. MRDF implements horizontal and vertical legislation in the area of food and feed and is responsible for the coordination of food safety inspections, in cooperation with EFET. The bases for MRDF management measures are the risk assessments undertaken by MRDF itself or its supervised organisations. MRDF also engages in transparent communication with consumers on topics of food and feed safety. MRDF is also responsible for feed safety, residues of plant protection products and veterinary medicinal products, genetically modified organisms (GMOs) and zoonoses. MRDF monitors veterinary inspections by local authorities and is the regulatory authority for pesticides (plant protection products and biocides).

The area of work of MRDF extends beyond food safety to include, for instance, plant health, plant protection, animal health, animal welfare and biocides.

62 National Reference Laboratories operate in Greece pursuant to Regulation (EU) No. 2017/625.


Ministry of Health

Name	Ministry of Health
Acronym	MH
Activities	<ul style="list-style-type: none">• Health policy, nutrition policy, food safety• Risk assessment• Risk communication• Risk management
Responsibilities	
Location	Athens
URL	http://www.moh.gov.gr

The Ministry of Health (MH) deals with the determination of sanitary conditions and control measures for enterprises subject to public health regulations, the national nutrition policy focusing on health promotion, the surveillance of the quality of water intended for human consumption, and the provision of guidelines regarding:

- a.) quality assurance and surveillance of bottled waters,
- b.) issuance of permits for bottling factories,
- c.) health control of bottling factories.

Hellenic Food Authority

Name	Hellenic Food Authority
Acronym	EFET
Activities	<ul style="list-style-type: none">• Risk assessment• Risk communication• Risk management• Codex Contact Point• EFSA Focal Point• RASFF contact point
Responsibilities	
Location	Athens
URL	http://www.efet.gr

The Hellenic Food Authority (EFET) is a subordinate authority of MRDF. EFET ensures that food produced, distributed or marketed in Greece meets food safety and hygiene standards as described by national and European legislation.

EFET supervises food inspections in Greece. EFET's central services monitor and coordinate tasks of regional EFET authorities. Risk assessments are compiled by a scientific advisory body (ESET) established within EFET. Risk assessments are the basis for risk management measures and their corresponding communication. The risk assessment work of EFET is performed in an independent fashion.


The area of work of EFET extends beyond food safety to include labelling, nutrition and health claims, nutrition policy, training, communication with stakeholders, etc.

National Organization for Medicines

Name	National Organization for Medicines
Acronym	EOF
Activities	<ul style="list-style-type: none">• Risk assessment• Risk communication• Risk management
Responsibilities	
Location	Athens
URL	http://www.eof.gr

The National Organization for Medicines (EOF) is a public entity administratively under MH. The task of EOF is to ensure public health and safety of medicinal products for human and veterinary use. The remit of EOF also includes foodstuffs intended for particular nutritional uses, food supplements, specific product types of biocides, medical devices and cosmetics. EOF is the regulatory authority for veterinary medicinal products and all health-related products in Greece. It monitors the post-marketing product quality, safety and efficacy. EOF proposes and promotes medical and pharmaceutical research. EOF also supplies the public and health professionals with objective information on medicines (for human and veterinary use) and other health-related products to ensure their safe and rational use and to support optimal cost effectiveness.

Benaki Phytopathological Institute

Name	Benaki Phytopathological Institute
Acronym	BPI
Activities	<ul style="list-style-type: none">• Research• Risk assessment
Responsibilities	
Location	Athens
URL	http://www.bpi.gr

The Benaki Phytopathological Institute (BPI) is a research institute, public sector entity that works independently in the field of science and operates under the supervision of the MRDF. BPI is responsible for the evaluation and risk assessment of plant protection products and specific product types of biocides. Regarding plant health, BPI performs risk assessments for emerging harmful organisms.


The research conducted at BPI is aimed to address various needs and requirements of the agricultural sector. The main scientific disciplines covered by BPI are related to phytopathology, entomology & agricultural zoology, pesticide safety for human health, non-target species and the environment.

Hellenic Agricultural Organisation - Demeter

Name	Hellenic Agricultural Organisation - Demeter
Acronym	ELGO - Demeter
Activities	<ul style="list-style-type: none">• Research• Risk assessment• Risk management
Responsibilities	
Location	Athens
URL	http://www.elgo.gr

ELGO-Demeter is a public benefit, independent body under the supervision of MRDF, and is governed by private law. The main objective of ELGO-Demeter is to develop and/or support actions aimed at modernizing and developing the country's agricultural sector, improving production processes, enhancing competitiveness, certifying quality agricultural products and food (e.g. origin and identity of products), establishing and certifying good agricultural practices and implementing controls in the milk and meat production chain in the country. Furthermore, ELGO-Demeter organises and operates vocational educational training and schools.

National Public Health Organization

Name	National Public Health Organization
Acronym	NPHO
Activities	<ul style="list-style-type: none">• Risk assessment• Risk communication• Risk management
Responsibilities	
Location	Athens
URL	https://eody.gov.gr/

The National Public Health Organisation (NPHO) is a legal entity governed by private law under the supervision of MH. It is responsible for the surveillance of food borne and water borne sporadic disease cases and outbreaks, and for the coordination of investigations of food borne and water borne disease outbreaks at the national level.

Regional and local levels

Regional and local levels in Greece consist of seven decentralised administrations, 13 regions and 325 municipalities. 13 regional EFET authorities and local authorities are responsible for the implementation of food inspections. MRDF and EFET are responsible for coordinating regional food inspections.

Both the central General Chemical State Laboratory and the regional Chemical Services are under the supervision of the Independent Authority for Public Revenue and are responsible for the laboratory analyses of foodstuffs.

Article 36 institutions

Institutions involved in the EFSA network pursuant to Article 36 Reg. (EC) No. 178/2002

1. Hellenic Food Authority (EFET) - Ενιαίος Φορέας Ελέγχου Τροφίμων (EFSA Focal Point)
2. Benaki Phytopathological Institute (BPI) - Μπενάκειο Φυτοπαθολογικό Ινστιτούτο
3. National and Kapodistrian University of Athens (NKUA) - Εθνικό και Καποδιστριακό Πανεπιστήμιο Αθηνών
4. University of Crete (UC) - Πανεπιστήμιο Κρήτης
5. Hellenic Agricultural Organisation - DEMETER (ELGO-Demetra) - Ελληνικός Γεωργικός Οργανισμός ΔΗΜΗΤΡΑ
6. Ministry of Rural Development and Food (MRDF) - Υπουργείο Αγροτικής Ανάπτυξης και Τροφίμων
7. National Centre for Scientific Research "Demokritos" (NCSR Demokritos) - Εθνικό Κέντρο Έρευνας
8. University of Thessaly (UTH) - Πανεπιστήμιο Θεσσαλίας
9. Aristotle University of Thessaloniki (AUTH) - Αριστοτέλειο Πανεπιστήμιο Θεσσαλονίκης
10. University of Patras (UPatras) - Πανεπιστήμιο Πατρών
11. Democritus University of Thrace (DUTH) - Δημοκρίτειο Πανεπιστήμιο Θράκης
12. Agricultural University of Athens (AUA) - Γεωπονικό Πανεπιστήμιο Αθηνών
13. International Hellenic University (IHU) - Διεθνές Πανεπιστήμιο της Ελλάδος

Retrieved from "<https://worldfoodsafetyalmanac.bfr.berlin/index.php?title=Greece:Greece&oldid=7274>"

This page was last edited on 30 November 2023, at 07:03 from EFET1.