

# How to read

---

To see a country's organisational structure in the field of food and feed safety and to learn about the different institutions within its food and feed safety structure, go to **Country profiles** and select the country on the map or from the list of country names. Each country profile provides an overview of the country's public institutions in the area of food and feed safety.



## Contents

---

Diagram of national institutions

Legal basis

National/central institutions

Responsibilities

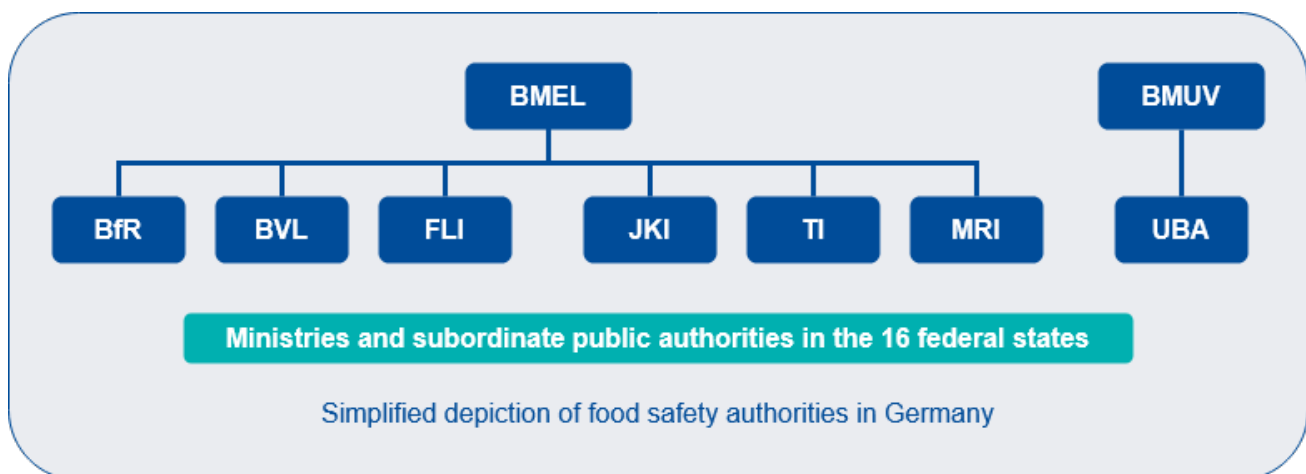
Regional and local institutions

Institutions involved in the European Food Safety Authority (EFSA) Network

## Diagram of national institutions

---

Profiles begin with a simple diagram showing the hierarchy of the country's public institutions in the field of food and feed safety. Institutions are listed using their acronyms. Those at the central/national level are shown in blue boxes. Regional and local institutions are shown in turquoise boxes.



## Legal basis

---

The legal basis for food and feed safety in the profiled country is briefly outlined.

# National/central institutions

Country profiles contain a short section for each national institution. These short sections include an overview box with the full name of the institution, its acronym and its activities within the area of food and feed safety. This overview box contains pictograms indicating the organisations's responsibilities and includes the location and website of the institution.

<b>Name</b>	German Federal Institute for Risk Assessment
<b>Acronym</b>	BfR
<b>Activities</b>	<ul style="list-style-type: none"> <li>• Risk assessment</li> <li>• Risk communication</li> <li>• Risk benefit assessment</li> <li>• Regulatory service</li> <li>• EFSA Focal Point</li> <li>• Research</li> </ul>
<b>Responsibilities</b>	
<b>Location</b>	Berlin
<b>URL</b>	<a href="https://www.bfr.bund.de/en">https://www.bfr.bund.de/en</a>

## Responsibilities

18 pictograms are used to illustrate institutions' areas of responsibility.

Pictogram	Responsibility
	Animal feed
	Animal health and welfare
	Biological hazards and zoonoses
	Biotechnology and genetic engineering
	Contaminants
	Drinking water
	Emerging risks
	Environmental risk assessment (ERA)
	Food contact materials and packaging
	Food ingredients
	Food supplements
	Mineral water
	Nanotechnology
	Novel foods
	Nutrition
	Plant health
	Plant protection products or pesticides
	Residues of veterinary medicinal products

## **Regional and local institutions**

---

One section of the country profile is devoted to institutions at the regional and local levels.

## **Institutions involved in the European Food Safety Authority (EFSA) Network**

---

Article 36 institutions are competent organisations designated by the EU Member States that can assist EFSA with its mission. Countries that belong to the EFSA network have a final section in the country profiles that lists all the Article 36 institutions in their country.

### **Institutions involved in the EFSA network pursuant to Article 36 Reg. (EC) No 178/2002**

1. German Federal Institute for Risk Assessment (BfR) (Bundesinstitut für Risikobewertung) (EFSA Focal Point)
2. Federal Office of Consumer Protection and Food Safety (BVL) (Bundesamt für Verbraucherschutz und Lebensmittelsicherheit)
3. ...

---

Retrieved from "[https://worldfoodsafetyalmanac.bfr.berlin/index.php?title=How\\_to\\_read&oldid=5849](https://worldfoodsafetyalmanac.bfr.berlin/index.php?title=How_to_read&oldid=5849)"

---

This page was last edited on 20 May 2022, at 10:47 from BfR1.